

Internet Protocol Version 4 (TCP/IPv4) Properties



General

You can get IP settings assigned automatically if your network supports this capability. Otherwise, you need to ask your network administrator for the appropriate IP settings.

Obtain an IP address automatically

Use the following IP address:

IP address:

192 . 168 . 1 . 233

Subnet mask:

255 . 255 . 255 . 0

Default gateway:

192 . 168 . 1 . 1

Obtain DNS server address automatically

Use the following DNS server addresses:

Preferred DNS server:

192 . 168 . 1 . 231

Alternate DNS server:

. . .

Validate settings upon exit

Advanced...

OK

Cancel

Server Manager

Server Manager Dashboard

Manage Tools View Help

Dashboard

- Local Server
- All Servers
- File and Storage Services ▸

WELCOME TO SERVER MANAGER

QUICK START

WHAT'S NEW

LEARN MORE

- 1 Configure this local server
- 2 Add roles and features
- 3 Add other servers to manage
- 4 Create a server group

Hide

Add Roles and Features Wizard

Before you begin

DESTINATION SERVER
srv2012.vtgit.com

Before You Begin

- Installation Type
- Server Selection
- Server Roles
- Features
- Confirmation
- Results

This wizard helps you install roles, role services, or features. You determine which roles, role services, or features to install based on the computing needs of your organization, such as sharing documents, or hosting a website.

To remove roles, role services, or features:
[Start the Remove Roles and Features Wizard](#)

Before you continue, verify that the following tasks have been completed:

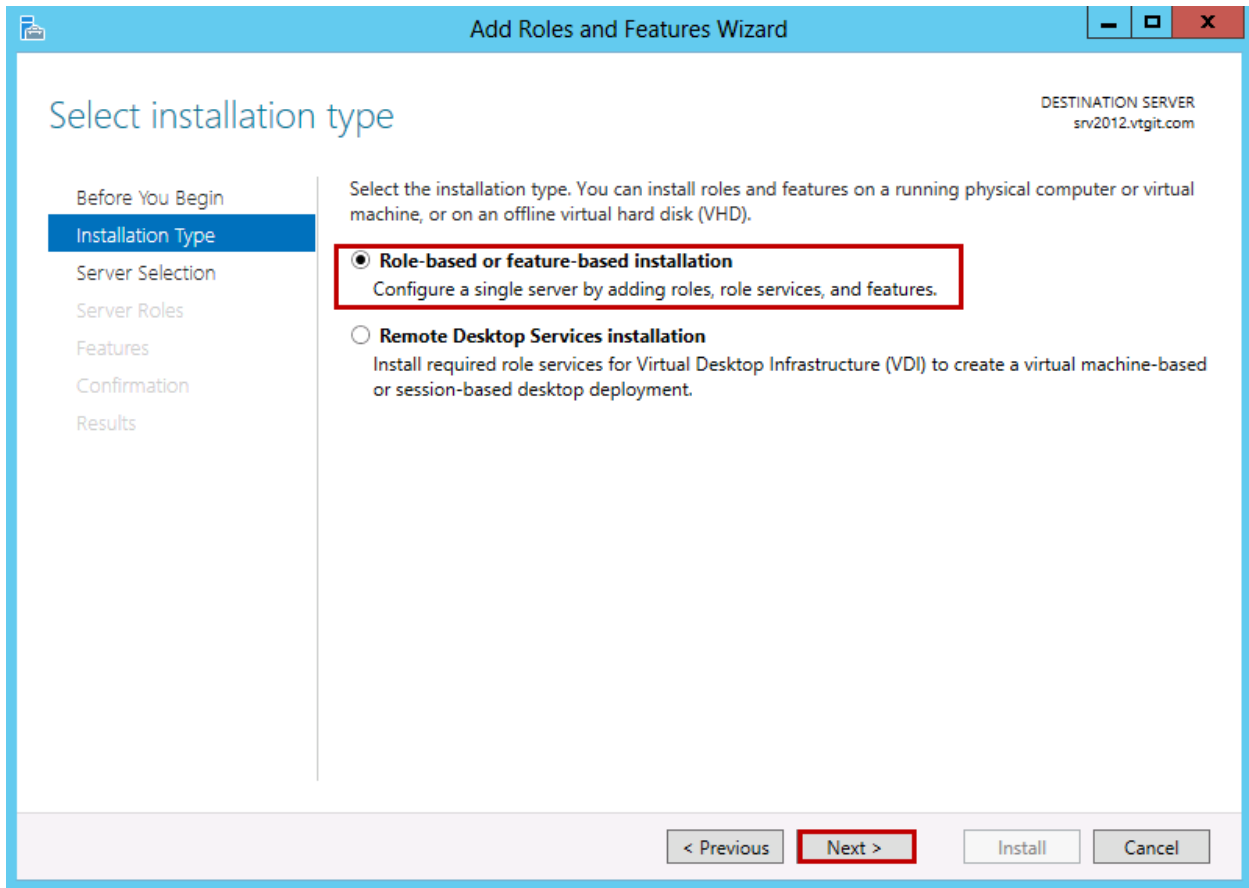
- The Administrator account has a strong password
- Network settings, such as static IP addresses, are configured
- The most current security updates from Windows Update are installed

If you must verify that any of the preceding prerequisites have been completed, close the wizard, complete the steps, and then run the wizard again.

To continue, click Next.

Skip this page by default

< Previous **Next >** Install Cancel



Add Roles and Features Wizard

Select installation type

DESTINATION SERVER
srv2012.vtgit.com

Before You Begin

Installation Type

Server Selection

Server Roles

Features

Confirmation

Results

Select the installation type. You can install roles and features on a running physical computer or virtual machine, or on an offline virtual hard disk (VHD).

Role-based or feature-based installation

Configure a single server by adding roles, role services, and features.

Remote Desktop Services installation

Install required role services for Virtual Desktop Infrastructure (VDI) to create a virtual machine-based or session-based desktop deployment.

< Previous

Next >

Install

Cancel

Windows logo icon

Add Roles and Features Wizard

DESTINATION SERVER
srv2012.vtgit.com

Select destination server

Before You Begin
Installation Type
Server Selection
Server Roles
Features
Confirmation
Results

Select a server or a virtual hard disk on which to install roles and features.

Select a server from the server pool
 Select a virtual hard disk

Server Pool

Filter:

| Name | IP Address | Operating System |
|-------------------|---------------|--|
| srv2012.vtgit.com | 192.168.1.233 | Microsoft Windows Server 2012 Datacenter |

1 Computer(s) found

This page shows servers that are running Windows Server 2012, and that have been added by using the Add Servers command in Server Manager. Offline servers and newly-added servers from which data collection is still incomplete are not shown.

< Previous **Next >** Install Cancel



Select server roles

DESTINATION SERVER
srv2012.vtgit.com

- Before You Begin
- Installation Type
- Server Selection
- Server Roles**
- Features
- AD DS
- Confirmation
- Results

Select one or more roles to install on the selected server.

Roles

- Active Directory Certificate Services
- Active Directory Domain Services**
- Active Directory Federation Services
- Active Directory Lightweight Directory Services
- Active Directory Rights Management Services
- Application Server
- DHCP Server
- DNS Server
- Fax Server
- File And Storage Services (Installed)
- Hyper-V
- Network Policy and Access Services
- Print and Document Services
- Remote Access
- Remote Desktop Services

Description

Active Directory Domain Services (AD DS) stores information about objects on the network and makes this information available to users and network administrators. AD DS uses domain controllers to give network users access to permitted resources anywhere on the network through a single logon process.

< Previous

Next >

Install

Cancel



Add Roles and Features Wizard



Add features that are required for Active Directory Domain Services?

You cannot install Active Directory Domain Services unless the following role services or features are also installed.

[Tools] Group Policy Management

▾ Remote Server Administration Tools

▾ Role Administration Tools

▾ AD DS and AD LDS Tools

Active Directory module for Windows PowerShell

▾ AD DS Tools

[Tools] Active Directory Administrative Center

[Tools] AD DS Snap-Ins and Command-Line Tools

Include management tools (if applicable)

Add Features

Cancel



Select features

DESTINATION SERVER
srv2012.vtgit.com

- Before You Begin
- Installation Type
- Server Selection
- Server Roles
- Features**
- AD DS
- Confirmation
- Results

Select one or more features to install on the selected server.

Features

- .NET Framework 3.5 Features
- .NET Framework 4.5 Features (Installed)
- Background Intelligent Transfer Service (BITS)
- BitLocker Drive Encryption
- BitLocker Network Unlock
- BranchCache
- Client for NFS
- Data Center Bridging
- Enhanced Storage
- Failover Clustering
- Group Policy Management
- Ink and Handwriting Services
- Internet Printing Client
- IP Address Management (IPAM) Server

Description

.NET Framework 3.5 combines the power of the .NET Framework 2.0 APIs with new technologies for building applications that offer appealing user interfaces, protect your customers' personal identity information, enable seamless and secure communication, and provide the ability to model a range of business processes.

< Previous

Next >

Install

Cancel



Active Directory Domain Services

DESTINATION SERVER
srv2012.vtgit.com

- Before You Begin
- Installation Type
- Server Selection
- Server Roles
- Features
- AD DS**
- Confirmation
- Results

Active Directory Domain Services (AD DS) stores information about users, computers, and other devices on the network. AD DS helps administrators securely manage this information and facilitates resource sharing and collaboration between users. AD DS is also required for directory-enabled applications such as Microsoft Exchange Server and for other Windows Server technologies such as Group Policy.

Things to note:

- To help ensure that users can still log on to the network in the case of a server outage, install a minimum of two domain controllers for a domain.
- AD DS requires a DNS server to be installed on the network. If you do not have a DNS server installed, you will be prompted to install the DNS Server role on this machine.
- Installing AD DS will also install the DFS Namespaces, DFS Replication, and File Replication services which are required by AD DS.

[Learn more about AD DS](#)

< Previous

Next >

Install

Cancel



Confirm installation selections

DESTINATION SERVER
srv2012.vtgit.com

Before You Begin

Installation Type

Server Selection

Server Roles

Features

AD DS

Confirmation

Results

To install the following roles, role services, or features on selected server, click Install.

Restart the destination server automatically if required

Optional features (such as administration tools) might be displayed on this page because they have been selected automatically. If you do not want to install these optional features, click Previous to clear their check boxes.

- Active Directory Domain Services
- Group Policy Management
- Remote Server Administration Tools
 - Role Administration Tools
 - AD DS and AD LDS Tools
 - Active Directory module for Windows PowerShell
 - AD DS Tools
 - Active Directory Administrative Center
 - AD DS Snap-Ins and Command-Line Tools

[Export configuration settings](#)
[Specify an alternate source path](#)

< Previous

Next >

Install

Cancel

Windows window titled "Add Roles and Features Wizard" with standard minimize, maximize, and close buttons in the title bar.

Installation progress

DESTINATION SERVER
srv2012.vtgit.com

Results

View installation progress

- Feature installation**
 - Configuration required. Installation succeeded on srv2012.vtgit.com.

Active Directory Domain Services
Additional steps are required to make this machine a domain controller.
Promote this server to a domain controller

Group Policy Management

Remote Server Administration Tools

Role Administration Tools

- AD DS and AD LDS Tools
 - Active Directory module for Windows PowerShell
- AD DS Tools
 - Active Directory Administrative Center
 - AD DS Snap-Ins and Command-Line Tools

1 You can close this wizard without interrupting running tasks. View task progress or open this page again by clicking Notifications in the command bar, and then Task Details.

[Export configuration settings](#)

< Previous Next > **Close** Cancel



Deployment Configuration

TARGET SERVER
srv2012.vtgit.com

Deployment Configuration

Domain Controller Options

Additional Options

Paths

Review Options

Prerequisites Check

Installation

Results

Select the deployment operation

- Add a domain controller to an existing domain
- Add a new domain to an existing forest
- Add a new forest

Specify the domain information for this operation

Domain:

Supply the credentials to perform this operation

[More about deployment configurations](#)

< Previous

Next >

Install

Cancel

Active Directory Domain Services Configuration Wizard

TARGET SERVER
srv2012.vtgit.com

Domain Controller Options

Deployment Configuration

- Domain Controller Options
- DNS Options
- Additional Options
- Paths
- Review Options
- Prerequisites Check
- Installation
- Results

Specify domain controller capabilities and site information

- Domain Name System (DNS) server
- Global Catalog (GC)
- Read only domain controller (RODC)

Site name:

Type the Directory Services Restore Mode (DSRM) password

Password:

Confirm password:

[More about domain controller options](#)

< Previous **Next >** Install Cancel

Active Directory Domain Services Configuration Wizard

TARGET SERVER
srv2012.vtgit.com

DNS Options

⚠ A delegation for this DNS server cannot be created because the authoritative parent zone cannot be found... Show more ✕

- Deployment Configuration
- Domain Controller Options
- DNS Options**
- Additional Options
- Paths
- Review Options
- Prerequisites Check
- Installation
- Results

Specify DNS delegation options

Update DNS delegation

[More about DNS delegation](#)

< Previous **Next >** Install Cancel

Active Directory Domain Services Configuration Wizard

TARGET SERVER
srv2012.vtgit.com

Additional Options

- Deployment Configuration
- Domain Controller Options
- DNS Options
- Additional Options**
- Paths
- Preparation Options
- Review Options
- Prerequisites Check
- Installation
- Results

Specify Install From Media (IFM) Options

Install from media

Specify additional replication options

Replicate from:

[More about additional options](#)

< Previous **Next >** Install Cancel

Active Directory Domain Services Configuration Wizard

TARGET SERVER
srv2012.vtgit.com

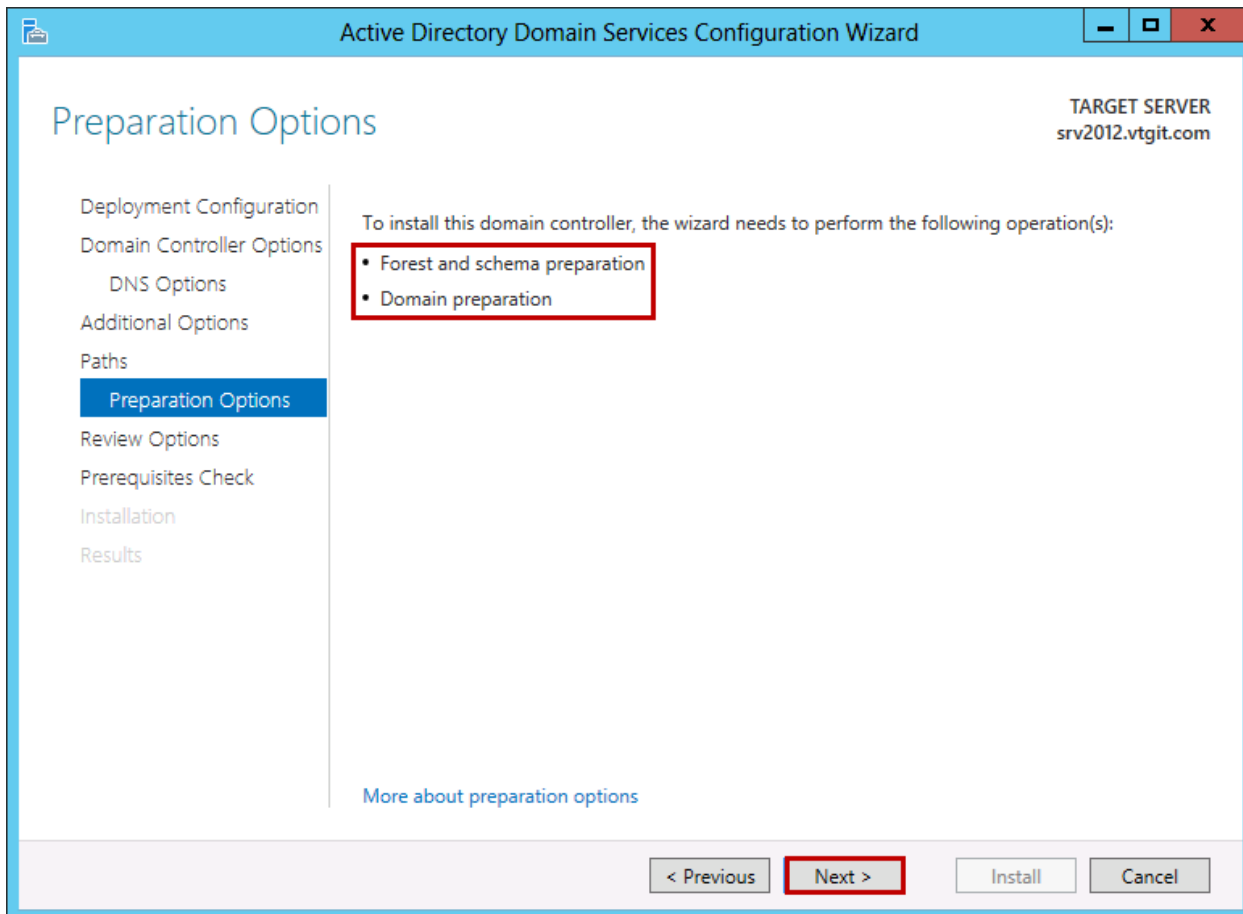
Paths

Specify the location of the AD DS database, log files, and SYSVOL

| | | |
|-------------------|-------------------|-----|
| Database folder: | C:\Windows\NTDS | ... |
| Log files folder: | C:\Windows\NTDS | ... |
| SYSVOL folder: | C:\Windows\SYSVOL | ... |

[More about Active Directory paths](#)

< Previous **Next >** Install Cancel



Active Directory Domain Services Configuration Wizard

TARGET SERVER
srv2012.vtgit.com

Review Options

- Deployment Configuration
- Domain Controller Options
 - DNS Options
 - Additional Options
 - Paths
 - Preparation Options
 - Review Options**
 - Prerequisites Check
- Installation
- Results

Review your selections:

Configure this server as an additional Active Directory domain controller for the domain "vtgit.com".

Site Name: Default-First-Site-Name

Additional Options:

- Read-only domain controller: No
- Global catalog: Yes
- DNS Server: Yes
- Update DNS Delegation: No
- Source DC: netserver.vtgit.com

These settings can be exported to a Windows PowerShell script to automate additional installations

[View script](#)

[More about installation options](#)

< Previous **Next >** Install Cancel

```
tmpDBBB.tmp - Notepad
File Edit Format View Help
#
# Windows PowerShell script for AD DS Deployment
#
Import-Module ADDSDeployment
Install-ADSDomainController `
-NoGlobalCatalog:$false `
-CreateDnsDelegation:$false `
-CriticalReplicationOnly:$false `
-DatabasePath "C:\Windows\NTDS" `
-DomainName "vtgit.com" `
-InstallDns:$true `
-LogPath "C:\Windows\NTDS" `
-NoRebootOnCompletion:$false `
-ReplicationSourceDC "netserver.vtgit.com" `
-SiteName "Default-First-Site-Name" `
-SysvolPath "C:\Windows\SYSVOL" `
-Force:$true
```

Active Directory Domain Services Configuration Wizard

TARGET SERVER
srv2012.vtgit.com

Prerequisites Check

✔ All prerequisite checks passed successfully. Click 'Install' to begin installation. [Show more](#) ✕

- Deployment Configuration
- Domain Controller Options
 - DNS Options
- Additional Options
- Paths
- Preparation Options
- Review Options
- Prerequisites Check**
- Installation
- Results

Prerequisites need to be validated before Active Directory Domain Services is installed on this computer

[Rerun prerequisites check](#)

^ View results

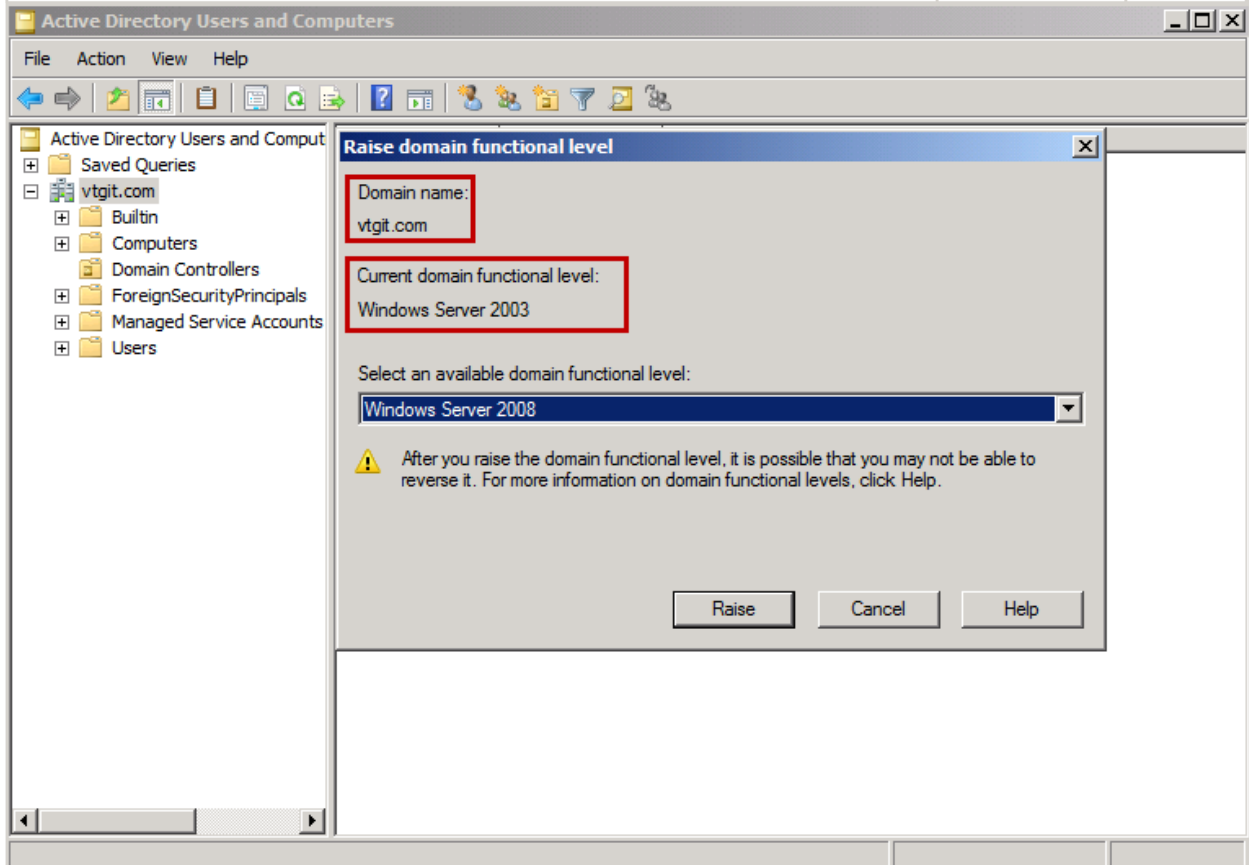
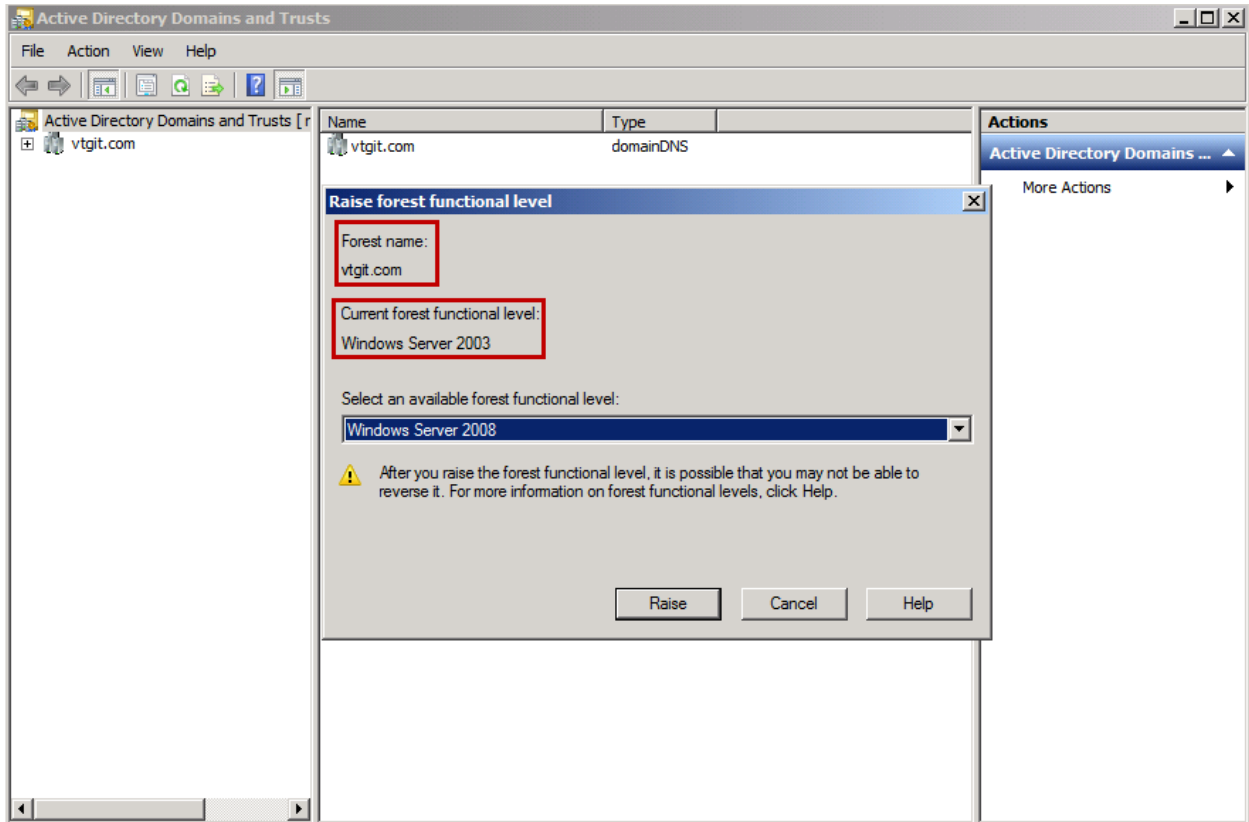
- ⚠ Windows Server 2012 domain controllers have a default for the security setting named "Allow cryptography algorithms compatible with Windows NT 4.0" that prevents weaker cryptography algorithms when establishing security channel sessions.

For more information about this setting, see Knowledge Base article 942564 (<http://go.microsoft.com/fwlink/?LinkId=104751>).
- ⚠ A delegation for this DNS server cannot be created because the authoritative parent zone cannot be found or it does not run Windows DNS server. If you are integrating with an existing DNS infrastructure, you should manually create a delegation to this DNS server in the parent zone to ensure reliable name resolution from outside the domain "vtgit.com". Otherwise, no action is required.

⚠ If you click Install, the server automatically reboots at the end of the promotion operation.

[More about prerequisites](#)

< Previous Next > **Install** Cancel



```
Administrator: Command Prompt
C:\>netdom query fsmo
Schema master                netserver.vtgit.com
Domain naming master        netserver.vtgit.com
PDC                          netserver.vtgit.com
RID pool manager            netserver.vtgit.com
Infrastructure master       netserver.vtgit.com
The command completed successfully.

C:\>_
```

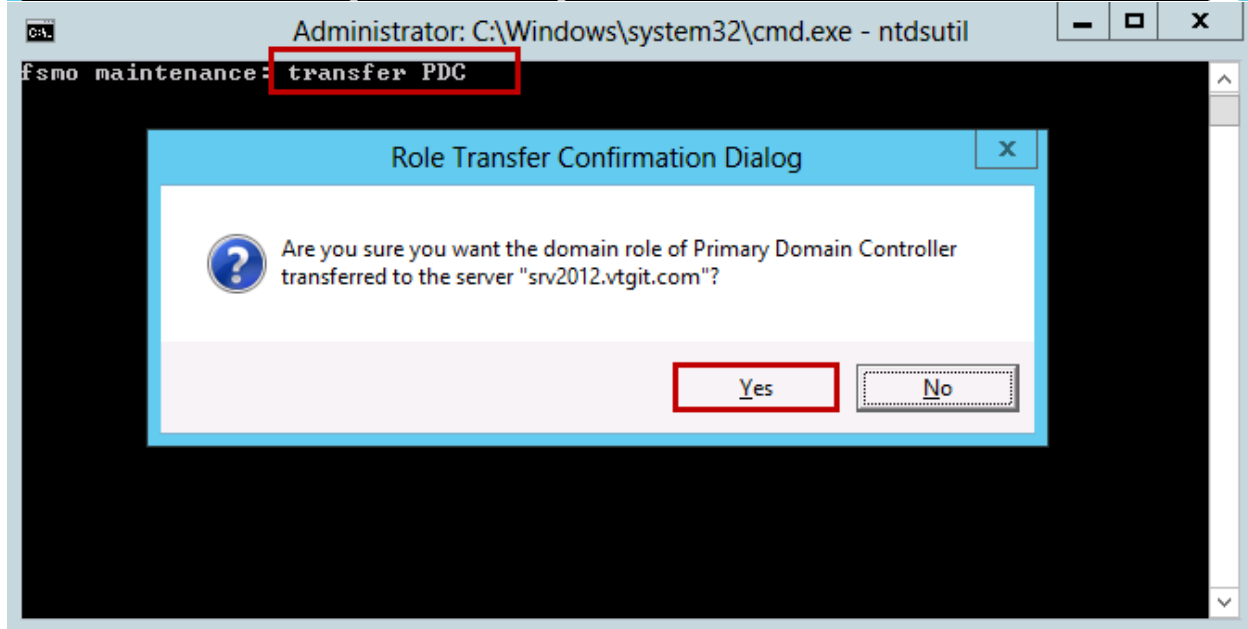
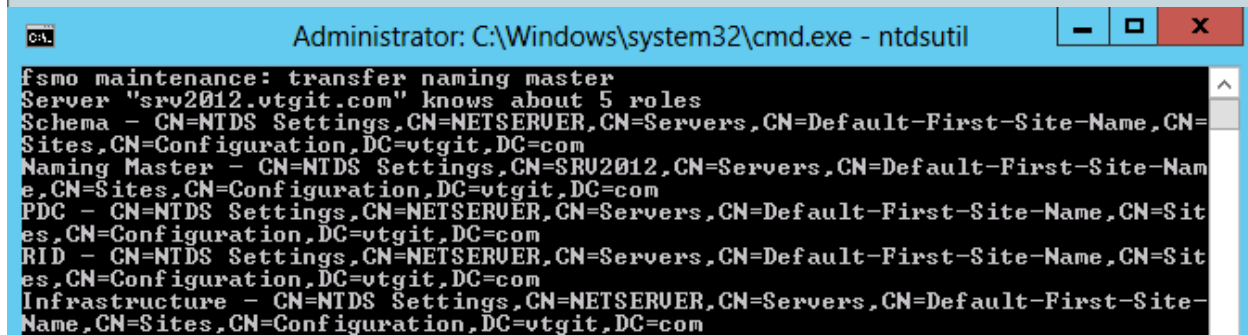
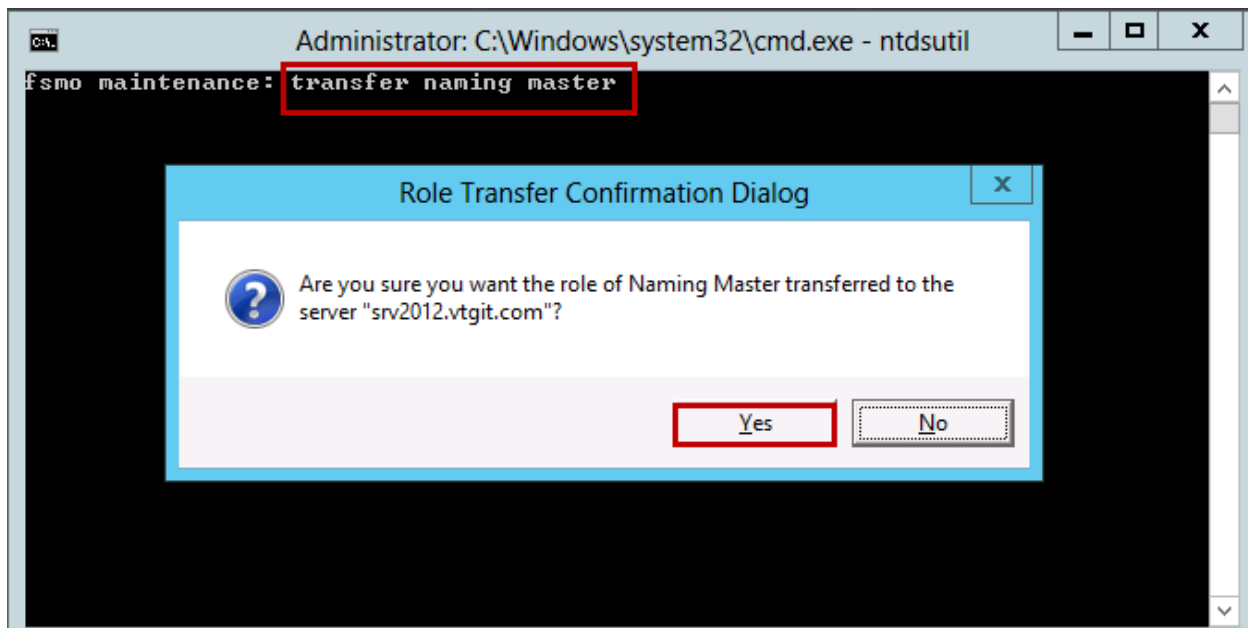
```
Administrator: Command Prompt - ntdsutil
C:\>ntdsutil
ntdsutil:
```

```
Administrator: Command Prompt - ntdsutil
ntdsutil: roles
fsmo maintenance: _
```

```
Administrator: Command Prompt - ntdsutil
fsmo maintenance: connections
server connections: _
```

```
Administrator: Command Prompt - ntdsutil
server connections: connect to server srv2012.vtgit.com
Binding to srv2012.vtgit.com ...
Connected to srv2012.vtgit.com using credentials of locally logged on user.
server connections: _
```

```
Administrator: Command Prompt - ntdsutil
server connections: q
fsmo maintenance: _
```



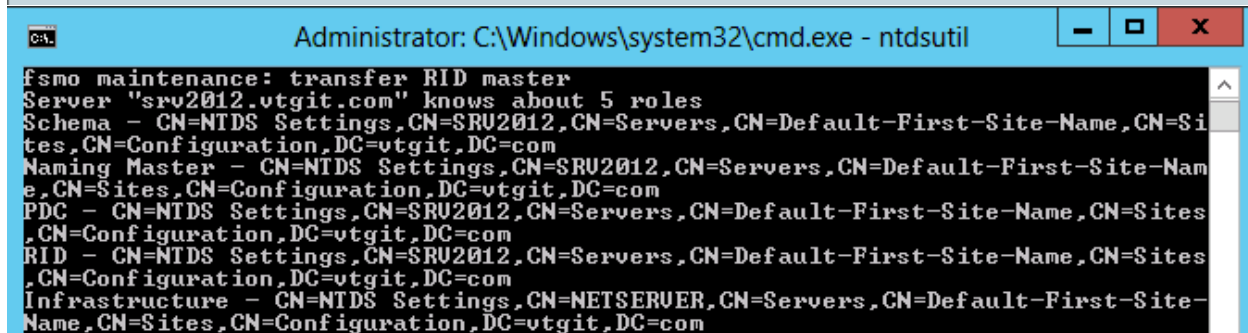
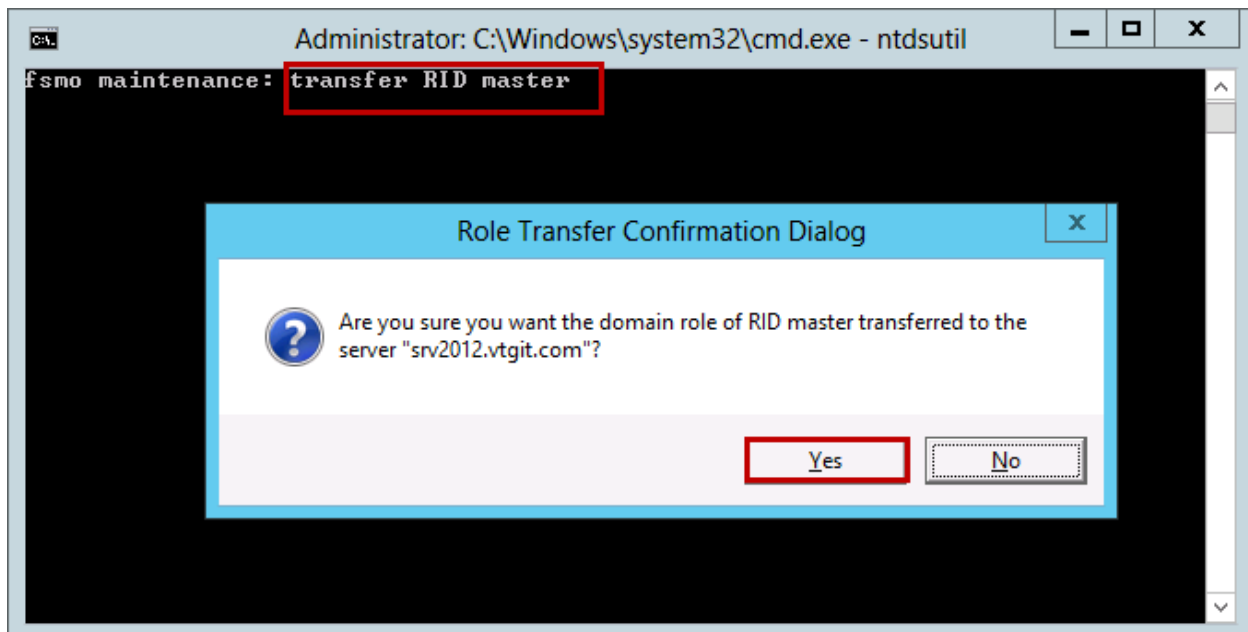
```
Administrator: C:\Windows\system32\cmd.exe - ntdsutil
fsmo maintenance: transfer PDC
Server "srv2012.vtgit.com" knows about 5 roles
Schema - CN=NTDS Settings,CN=NETSERUER,CN=Servers,CN=Default-First-Site-Name,CN=
Sites,CN=Configuration,DC=vtgit,DC=com
Naming Master - CN=NTDS Settings,CN=SRU2012,CN=Servers,CN=Default-First-Site-Name,CN=
Sites,CN=Configuration,DC=vtgit,DC=com
PDC - CN=NTDS Settings,CN=SRU2012,CN=Servers,CN=Default-First-Site-Name,CN=
Sites,CN=Configuration,DC=vtgit,DC=com
RID - CN=NTDS Settings,CN=NETSERUER,CN=Servers,CN=Default-First-Site-Name,CN=
Sites,CN=Configuration,DC=vtgit,DC=com
Infrastructure - CN=NTDS Settings,CN=NETSERUER,CN=Servers,CN=Default-First-Site-
Name,CN=Sites,CN=Configuration,DC=vtgit,DC=com
```

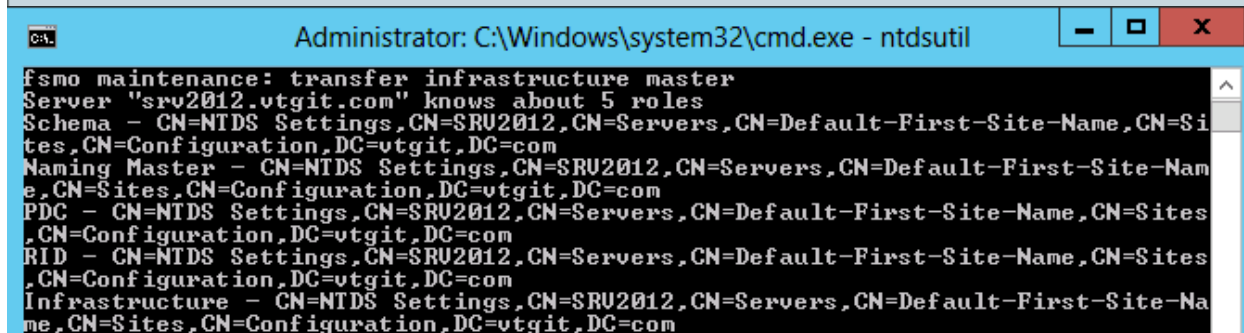
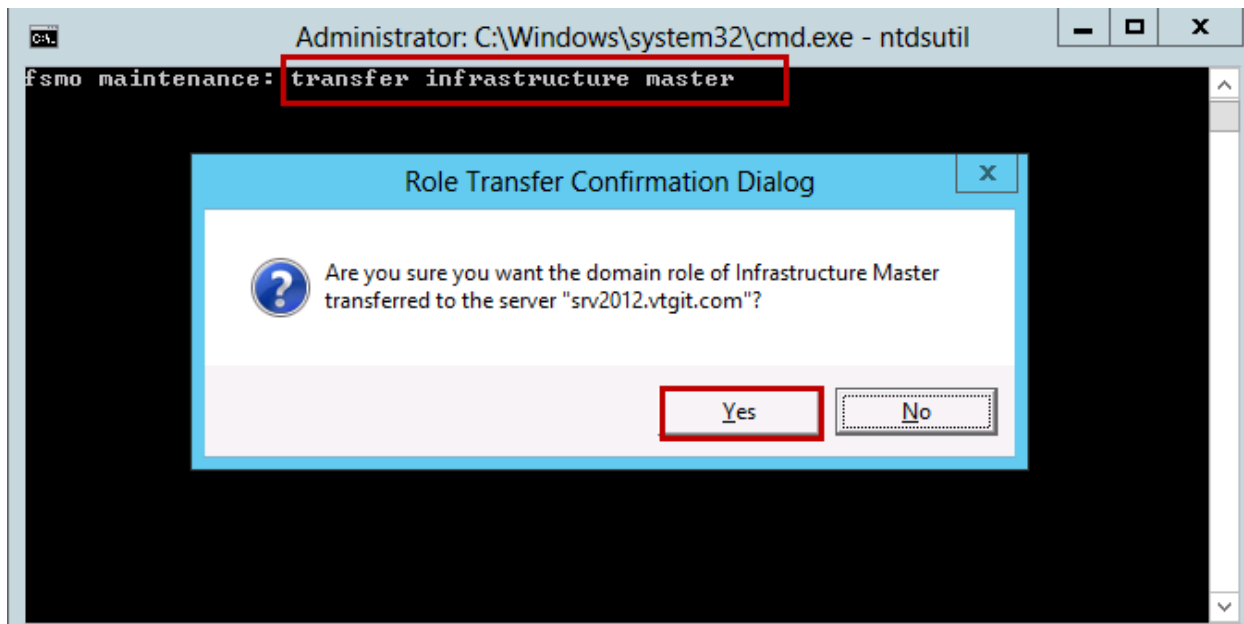
```
Administrator: C:\Windows\system32\cmd.exe - ntdsutil
fsmo maintenance: transfer schema master
```

Role Transfer Confirmation Dialog

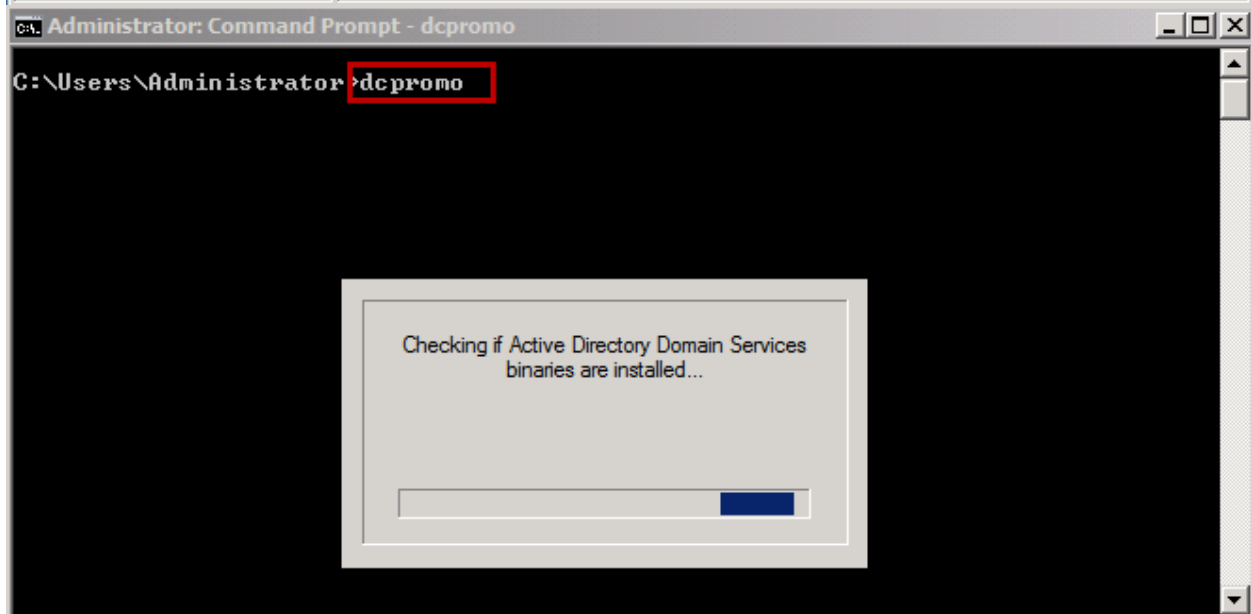
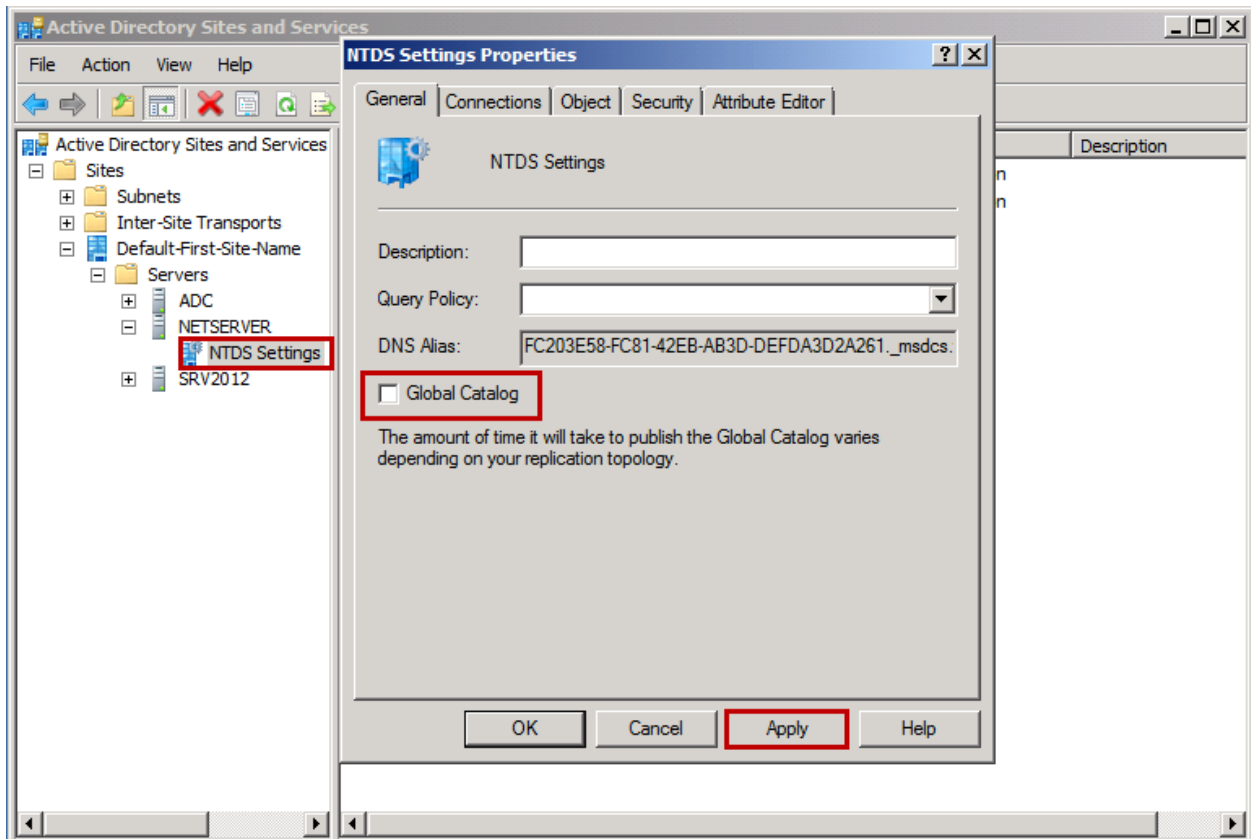
Are you sure you want the role of Schema Master transferred to the server "srv2012.vtgit.com"?

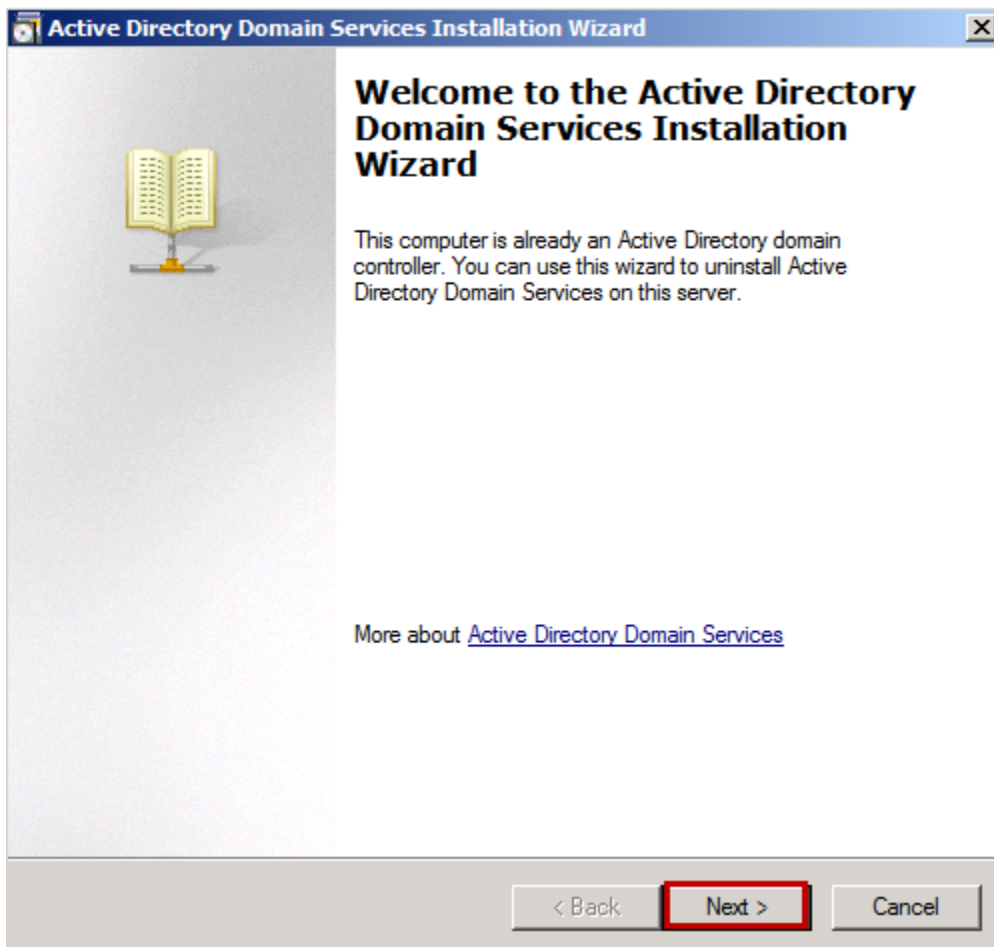
```
Administrator: C:\Windows\system32\cmd.exe - ntdsutil
fsmo maintenance: transfer schema master
Server "srv2012.vtgit.com" knows about 5 roles
Schema - CN=NTDS Settings,CN=SRU2012,CN=Servers,CN=Default-First-Site-Name,CN=
Sites,CN=Configuration,DC=vtgit,DC=com
Naming Master - CN=NTDS Settings,CN=SRU2012,CN=Servers,CN=Default-First-Site-Name,CN=
Sites,CN=Configuration,DC=vtgit,DC=com
PDC - CN=NTDS Settings,CN=SRU2012,CN=Servers,CN=Default-First-Site-Name,CN=
Sites,CN=Configuration,DC=vtgit,DC=com
RID - CN=NTDS Settings,CN=NETSERUER,CN=Servers,CN=Default-First-Site-Name,CN=
Sites,CN=Configuration,DC=vtgit,DC=com
Infrastructure - CN=NTDS Settings,CN=NETSERUER,CN=Servers,CN=Default-First-Site-
Name,CN=Sites,CN=Configuration,DC=vtgit,DC=com
```

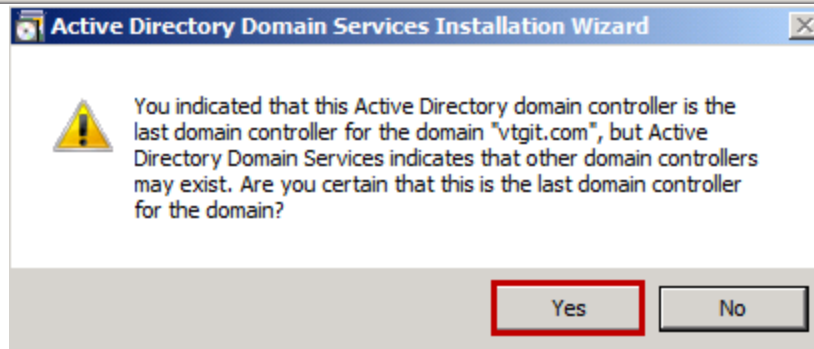
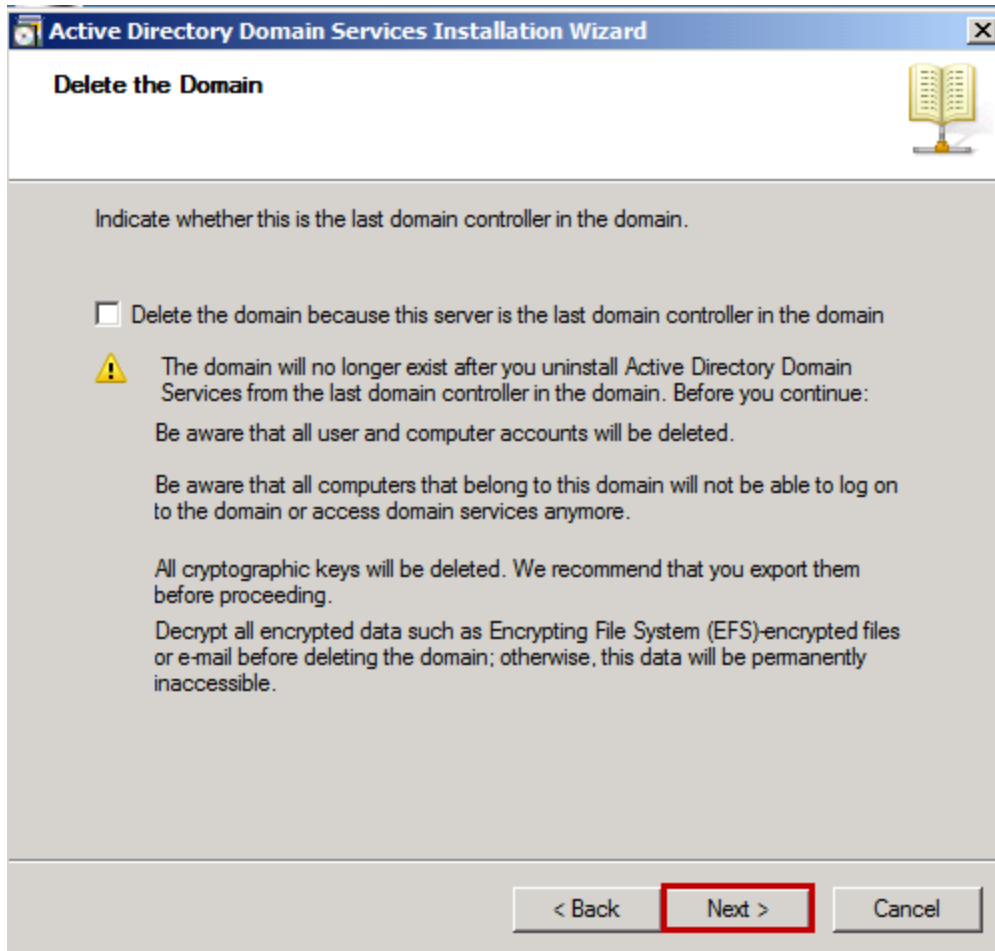



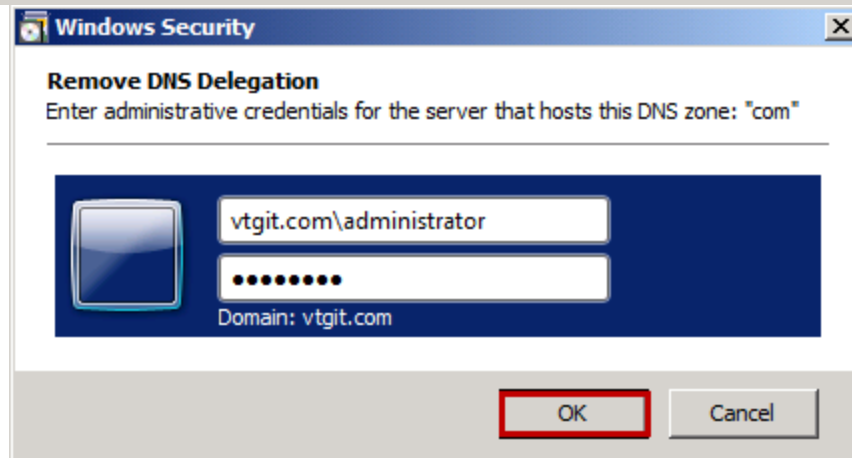
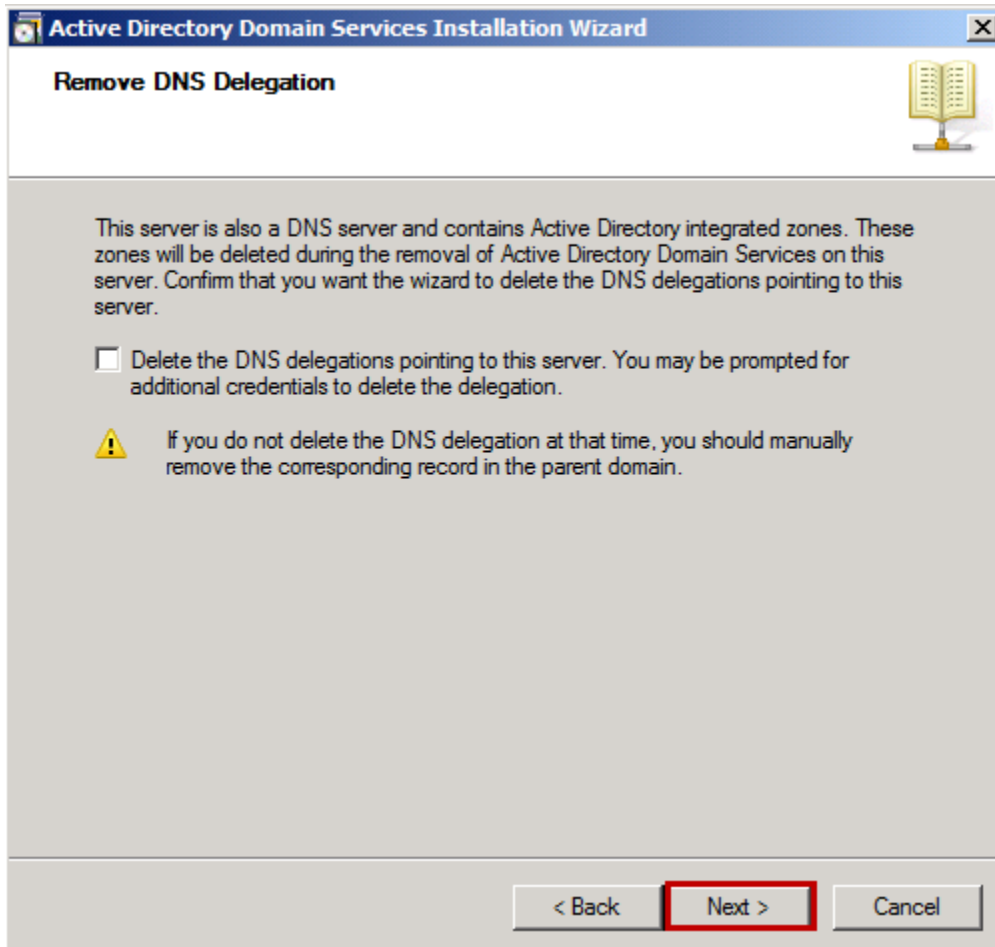


- Remote Desktop Services
- Active Directory Administrative Center
- Active Directory Domains and Trusts**
- Active Directory Module for Windows PowerShell
- Active Directory Sites and Services
- Active Directory Users and Computers
- ADSI Edit
- Component Services
- Computer Management
- Data Sources (ODBC)
- DNS
- Event Viewer
- Group Policy Management
- iSCSI Initiator
- Local Security Policy
- Performance Monitor
- Security Configuration Wizard
- Server Manager
- Services
- Share and Storage Management
- Storage Explorer
- System Configuration
- Task Scheduler
- Windows Firewall with Advanced Security
- Windows Memory Diagnostic
- Windows PowerShell Modules
- Windows Server Backup









Active Directory Domain Services Installation Wizard

Administrator Password

Type a password for the new Administrator account on this server.

Password:

Confirm password:

< Back **Next >** Cancel

